

# STEAMMASTER 4000

## INSTALLATION AND MAINTENANCE INSTRUCTIONS

Important: Do not throw instructions away after installation.  
Keep for maintenance reference

### INSTALLATION

Place the mounting plate to the wall, and mark the (6) holes that secure the mounting plate, and the hose rack to the wall. (We recommend mounting the mixer 5 feet from the floor to the centerline of the control valves.) Then, using a 3/4" drill bit, drill the six holes at least two inches deep to accommodate the wall anchors (furnished). The mixing unit is already mounted to the mounting plate, and all that is now required, is to secure the mounting plate, and hose rack to the wall with the (6) lag screws (also furnished). The mixing unit is now ready for piping.

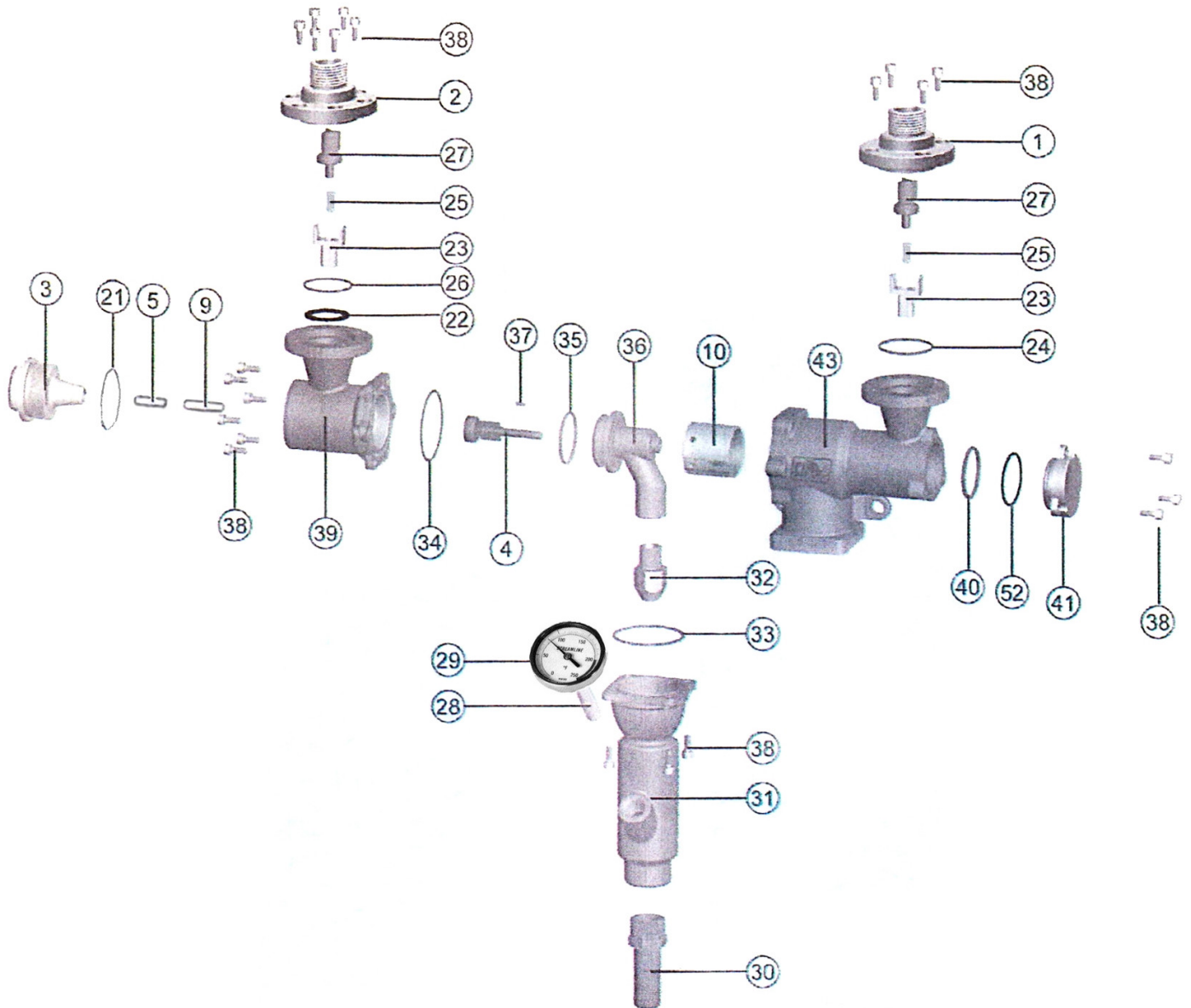
### MAINTENANCE INSTRUCTIONS

The three piece body on the Steammaster 4000 series mixer makes the unit easy to disassemble for maintenance. Regularly scheduled maintenance programs are recommended to achieve optimum performance. The frequency of any required maintenance, will be directly related to your individual steam and water conditions.

### IMPORTANT

Scheduled maintenance time can be substantially reduced, if strainers are installed above the control valves. We recommend "y" strainers with a 100 mesh stainless steel screen on the steam side, and a 20 or 30 mesh screen on the water side.

# EXPLODED VIEW OF STEAMASTER 4000



23	NRV shutter guide	2
22	Gasket	1
21	Gasket	1
10	Water shutter	1
9	Steam shutter shaft	1
5	Steam shutter spring	1
4	Steam shutter	1
3	Plug, steam side	1
2	NRV flanged casing, steam side	1
1	NRV flanged casing, water side	1
Pos.	Denomination	Q.ty

33	O-ring	1
32	Steam nozzle	1
31	Mixing box	1
30	Hose connector	1
29	Thermometer	1
28	Thermometer bulb	1
27	NRV shutter	2
26	O-ring	1
25	NRV shutter spring	2
24	O-ring	1
Pos.	Denomination	Q.ty

52	Gasket	1
43	Flanged casing, water side	1
41	Plug, water side	1
40	O-ring	1
39	Flanged casing, steam side	1
38	Screw, socket head	23
37	Pin	1
36	Steam shutter seat	1
35	O-ring	1
34	O-ring	1
Pos.	Denomination	Q.ty

